

INSTRUMENT APPROACH CHART - ICAO

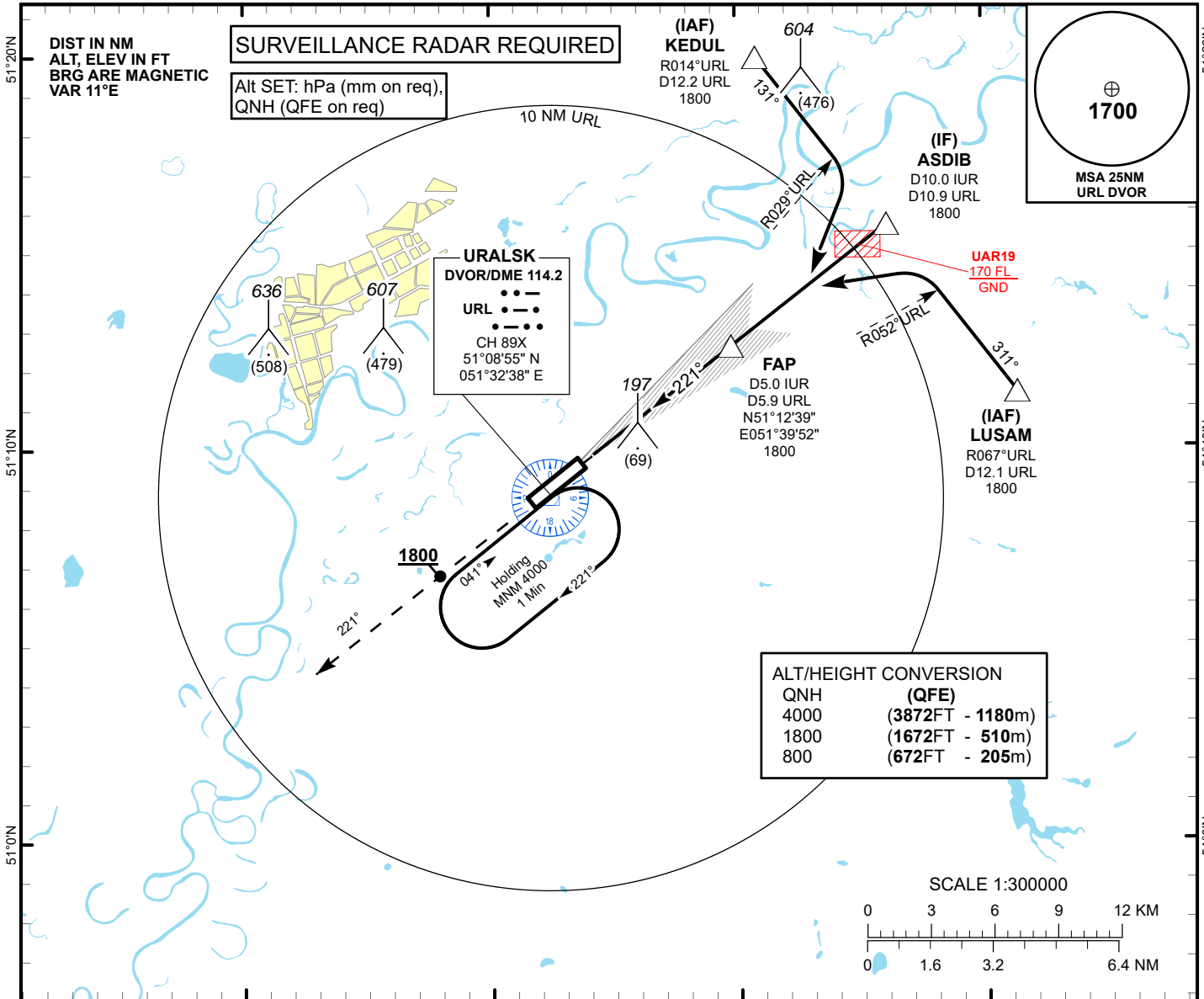
AERODROME ELEV 128 FT
HEIGHTS RELATED TO THR RWY22 - ELEV 128 FT

ILS
LLZ 109.7
IUR ●●●
GP 333.2
CH 34X

URALSK TOWER 119.7
URALSK ATIS (EN) 124.8
URALSK ATIS (RU) 134.9

URALSK ILS/DME RWY 22

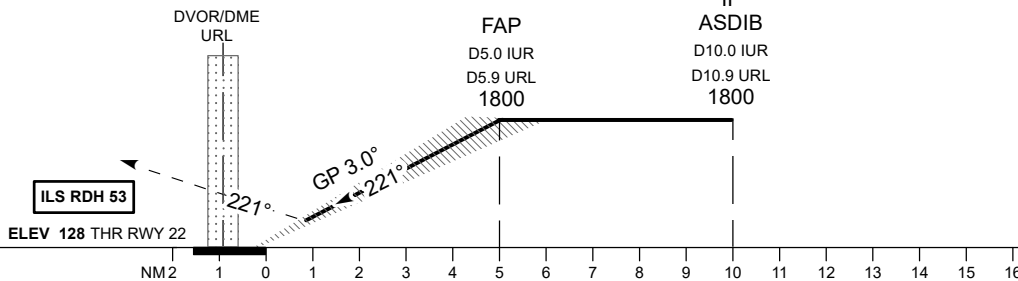
51°20'E 51°30'E 51°40'E 51°50'E



MISSED APPROACH

Climb on track 221° to 1800 ft.
After passing 1800 ft radar
vectoring will be provided.

TRANSITION ALT
10000



CHANGE: Add ATIS, editorial.

Aircraft Category	A	B	C	D	DIST to THR DME IUR	NM	1	2	3	4	5	
Straight-in Approach OCA/H					DME URL	NM	1.9	2.9	3.9	4.9	5.9	
	CAT I	328(200)	328(200)	328(200)	328(200)	ALTITUDE	FT	500	821	1144	1468	1800
						HEIGHT	FT	372	693	1016	1340	1672

DME IUR ZERO RANGED TO THR RWY 22

Aerodrome Operating Minima DH ft x RVR(CMV)	CAT I					GS	Kt	80	100	120	140	160	180
						Desc.Rate (5.2%)	ft/min	420	530	630	740	840	950

URALSK
ILS/DME

AERONAUTICAL DATA TABULATION

ILS approach to RWY22 from KEDUL, ASDIB, LUSAM	
Fix/point	Coordinates
DVOR/DME URL	51° 08' 55.2"N 051° 32' 37.6"E
(FAP) D5.0 IUR, D5.9 URL	51° 12' 39.4"N 051° 39' 51.5"E
ASDIB (IF) D10.0 IUR, D10.9 URL	51° 15' 43.6"N 051° 46' 09.5"E
KEDUL (IAF) R014°, D12.2 URL	51° 19' 58.7"N 051° 40' 51.6"E
LUSAM (IAF) R067°, D12.1 URL	51° 11' 28.3"N 051° 51' 26.5"E
THR RWY22	51° 09' 35.20"N 051° 33' 34.95"E
LOC IUR	51° 08' 24.8"N 051° 31' 11.5"E